



PYP HANDBOOK

IB Primary Years Programme (PYP)

2025-2026



MEMBER

Shirakatsy Lyceum Mission

Our mission is to develop future leaders, intellectuals, and citizens possessing and respecting national and global human values.

Shirakatsy Lyceum Vision

To be a leading international educational institution that inspires and empowers the community to achieve academic excellence, personal development, and active participation in a global society.

The IB Mission

The International Baccalaureate® aims to develop inquiring, knowledgeable and caring young people who help to create a better and more peaceful world through intercultural understanding and respect.

To this end the organization works with schools, governments and international organizations to develop challenging programmes of international education and rigorous assessment.

These programmes encourage students across the world to become active, compassionate and lifelong learners who understand that other people, with their differences, can also be right.



IB LEARNER PROFILE

The aim of all IB programs is to develop internationally minded people who, recognize their common humanity and shared guardianship of the planet, help to create a better and more peaceful world.

Inquirer: We nurture our curiosity, developing skills for inquiry and research. We know how to learn independently and with others. We learn with enthusiasm and sustain our love of learning throughout life.

Knowledgeable: We develop and use conceptual understanding, exploring knowledge across a range of disciplines. We engage with issues and ideas that have local and global significance.

Thinkers: We use critical and creative thinking skills to analyse and take responsible action on complex problems. We exercise initiative in making reasoned, ethical decisions.

Communicator: We express ourselves confidently and creatively in more than one language and in many ways. We collaborate effectively, listening carefully to the perspectives of other individuals and groups.

Principled: We act with integrity and honesty, with a strong sense of fairness and justice, and with respect for the dignity and rights of people everywhere. We take responsibility for our actions and their consequences.

Open-minded: We critically appreciate our own cultures and personal histories, as well as the values and traditions of others. We seek and evaluate a range of points of view, and we are willing to grow from the experience.

Caring: We show empathy, compassion and respect. We have a commitment to service, and we act to make a positive difference in the lives of others and in the world around us.

Risk-takers: We approach uncertainty with forethought and determination; we work independently and cooperatively to explore new ideas and innovative strategies. We are resourceful and resilient in the face of challenges and change.

Balanced: We understand the importance of balancing different aspects of our lives-intellectual, physical, and emotional-to achieve well-being for ourselves and others. We recognize our interdependence with other people and with the world in which we live.

Reflective: We thoughtfully consider the world and our own ideas and experience. We work to understand our strengths and weaknesses in order to support our learning and personal development.

About Shirakatsy Lyceum

Shirakatsy Lyceum International Scientific and Educational Complex, established in **1990** as a high school with a goal to provide a high standard curriculum with consideration of special needs of gifted and talented students, now offers three IB programmess – **PYP**, **MYP**, and **DP**- to more than 1200 students.

Keeping our balanced philosophy, we address educational, social, health, and civic activ-ism issues through our academic program, after school curriculum, supporting the learn-ing environment and infrastructure.

The school premises include kindergarten and primary schools situated near big campus-es for middle and high schools.

Our curriculum developed to meet individual needs of students to the greatest extent possi-ble as well as implementation of the three **IB programs in Armenia** makes us one of the lead-ing educational institutions in Armenia proven by awards received from national and interna-tional organizations. The academic program is built on national curriculum and addresses IB programmes’ standards and practices. Instruction of foreign languages is emphasized: along with Armenian, students learn Russian and English, German, Spanish or French.

Professionalism and commitment of teachers and leadership result in high performance and successful career opportunities of our graduates in Armenia and abroad.

The Lyceum has a psychological center and laboratory to better address individual needs of students and offer a balanced and safe atmosphere.

The lyceum has developed a rich after school curriculum with a wide range of activities, including after school clubs and summer program in its facility in Hankavan, a resort in Kotayk Province of Armenia.

Modern Science Laboratories, Library enriched with both print and electronic resources, indoor and outdoor sports areas, including tennis courts, support students’ learning. Well-equipped school cafeteria offers breakfast and lunch to all students.

School minibuses take the students and teachers from Yerevan and surrounding cities to school and back home.

Our graduates enter universities in Armenia and abroad with high levels of performance. Vast majority of graduates get full scholarships, while almost all receive partial support from universities or other institutions.

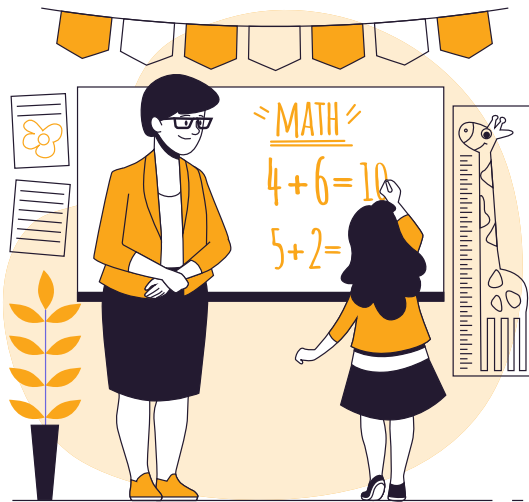
Shirakatsy Lyceum is a member of **International Baccalaureates Schools Association of CIS Countries**, **Union of IT Enterprises of Armenia**, and a global member of the **Round Square**, a world-wide association of schools sharing unique and ambitious goals achieved by participating in community service, work projects, exchange programmes and adventur-ing.

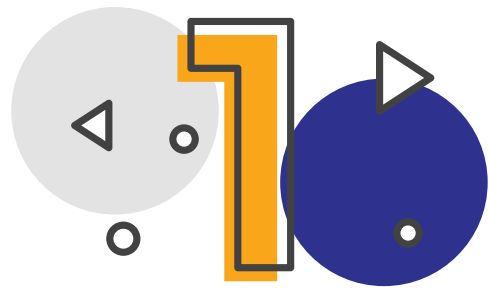


The mission of the International Baccalaureate

The mission of the International Baccalaureate is to form and develop curious, knowledgeable and caring young people who will create a better and more peaceful world through intercultural understanding and respect.

Today, the IB collaborates with governments and international organizations to improve programs that promote international education and to ensure their impartial evaluation. The IB is an advisory organization to UNESCO and the Council of Europe.





What is the International Baccalaureate Organization (IBO)?

- The IBO is a non-profit and non-governmental educational organization.
- It was founded in 1968 in Geneva, Switzerland.
- It is governed by a 16-member council and financed through fees from IB schools, trainings, and publications.
- The IBO offers three levels of international educational programmes:
 - The Primary Years Programme (PYP) at the primary school level
 - The Middle Years Programme (MYP) at the middle school level
 - The Diploma Programme at the high school level
 - The Career-related Programme at the high school level
- Currently, more than 1,105,000 students study in over 5,500 authorized IB schools across 159 countries.



When and why was the IBO created?

- In 1948, Marie-Thérèse Maurette proposed a system that later became the IB Diploma Programme, when she wrote “Is There a Way of Teaching for Peace” for UNESCO.
- In the mid-1960s, a group of teachers at the International School of Geneva created the International Schools Examination Syndicate, which later developed into the International Baccalaureate Organization.



What is the IB Mission?

The mission of the IB is to develop inquiring, knowledgeable, and caring young people who help to create a better and more peaceful world through intercultural understanding and respect.

Today, the IB cooperates with governments and international organizations to enhance international education and ensure its fair evaluation. It serves as a consultative body for UNESCO and the Council of Europe.



What is the IB Primary Years Programme (PYP)?

Regardless of location or structure, the goal of the IB Primary Years Programme (PYP) is to nurture internationally minded individuals.

International mindedness in the PYP is developed through the IB Learner Profile.



What are the Learner Profile Attributes?

These are attributes determined to be the most important in creating the citizens of the world.

- **Inquirers** - I am curious and know how to discover answers to many of my questions. I love to learn!
- **Thinkers** - I use my thinking skills to make good choices and solve problems.
- **Communicators** - I understand and share ideas in more than one language.
- **Risk Takers** - I try new things, love to explore, and confidently share my experiences.
- **Knowledgeable** - I explore big ideas that are important. I know and can do a lot of important things.
- **Principled** - I am fair and honest. I can make good decisions about what is right and wrong for me.
- **Caring** - I am concerned about other people's needs and feelings. I believe it is important to help others.
- **Open-Minded** - I am comfortable with differences. I welcome and respect other people's points of views and ways of doing things.
- **Balanced** - To be healthy, it is important for me to balance the needs of my mind and body.
- **Reflective** - I think about and discuss my learning, skills, and products.



What and how will my child learn in the Primary School?

What is a Transdisciplinary Theme?

The IB uses “transdisciplinary” to describe the learning connections that exist across all subject areas. They are interconnected and can be applied both within subjects and in real life.

The six transdisciplinary themes are:

- Who we are
- Where we are in place and time
- How we express ourselves
- How the world works
- How we organize ourselves
- Sharing the planet



What does the PYP framework look like?

- 1. Concepts** – Seven specified concepts drive inquiry and allow for transdisciplinary connections:
 - Form: What is it like?
 - Function: How does it work?
 - Causation: Why is it like this?
 - Change: How is it changing?
 - Connection: How is it connected to other things?
 - Perspective: What are the points of view?
 - Responsibility: What is our responsibility?
- 2. Approaches to Learning (ATL skills)** – Five sets of transdisciplinary skills developed through inquiry-based learning:
 - Thinking
 - Social
 - Communication
 - Research
 - Self-management
- 3. Agency** – The power to take meaningful and intentional action, giving students voice, choice, and ownership of their learning.
- 4. Action** – Students are encouraged to reflect, make informed choices, and take independent actions that benefit their peers, the school staff, and society.
- 5. Knowledge** – The PYP identifies broad areas of knowledge, explored through the six transdisciplinary themes, rather than limiting learning to textbooks.
- 6. Units of Inquiry** – Each year, all six themes are explored across subjects (math, language, social studies, arts, music, dance, PE, chess, technology, etc.), with inquiries lasting 4–6 weeks.

What extracurricular clubs are available in the Primary School?

Each child, with their parent's choice, can join one extracurricular club included in the contract:

- Arts
- Crafts
- Dance
- Hip-hop
- Choir
- Chess
- Karate

Additionally, there are paid clubs that require extra registration: Music Theatre, Piano, and German Club.

What should parents know about school transportation?

The homeroom teacher will provide the bus route number, driver, and attendant's details. Parents should be at the designated stop 2 minutes before the scheduled time. Parents who bring children with their own cars should arrive at school by 8:45, and pick up at 15:40 or 17:20 (if in afterschool program). Please park away from the school entrance and accompany your child on foot to and from the gate.

How is food organized in the Primary School?

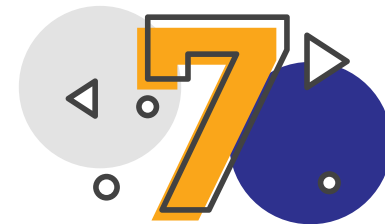
Children eat three times during the school day – breakfast, lunch, and afternoon snack. Students in the afterschool program have one additional meal. Menus are shared with parents.

There is no need to send food with children. If desired, parents may pack a small portion of fresh fruit. Sweets and candy are not allowed. Please inform the school about any food allergies.

What is the approach to homework?

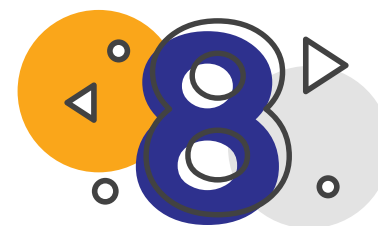
In the Primary School, instead of "homework," the term independent practice tasks is used, emphasizing that children should complete them independently. The goal is to help teachers check the level of understanding.

Independent practice begins in the second semester of Grade 1. Before that, the school's psychological service organizes a seminar for parents on fostering independence and supporting children's learning at home.



How can parents support their child's learning process?

- Regularly check what your child has been doing at school.
- Read all emails carefully – they include urgent announcements, progress updates, and information about challenges.
- Provide necessary learning supply.
- Show interest in your child's achievements.
- Help your child organize their day to avoid overload.
- Support, but do not replace, your child's work on projects. For example, help find resources, take a field trip, or assist in presentation, but let the child create the work.
- Volunteer in your child's class, the library, cafeteria, or in school-wide events.
- Maintain continuous, meaningful communication with the school.



What makes learning effective at the Primary School?

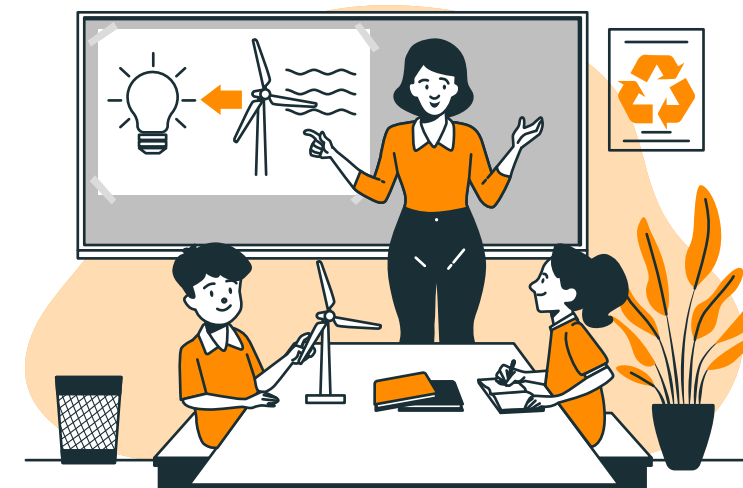
The Primary School is a learning community that, in alignment with the IB philosophy and the natural curiosity of children, places the learner at the center.


The PYP model matches our goals, as our mission is to develop internationally minded individuals who remain lifelong learners.

Our mission is to nurture true intellectuals and citizens, rooted in national values and enriched by universal human values.


We are always happy to welcome you to Shirakatsy Lyceum Primary School.


We appreciate your support!



 15 Mushegh Galshoyan, Nor Nork, 5, Yerevan, RA

 (+374 10) 668281

 primary@shirakatsy.am

 www.shirakatsy.am